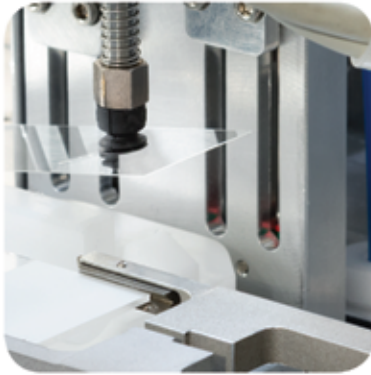
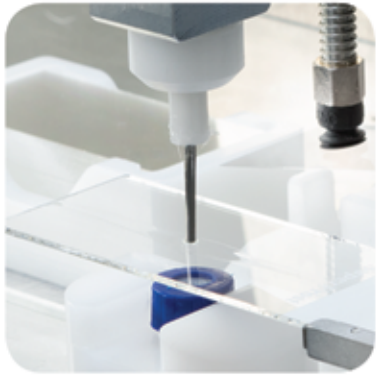
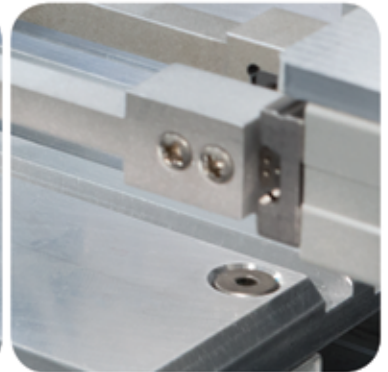
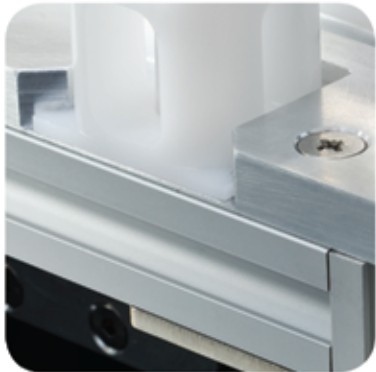


HISTOLOGY EQUIPMENT



**AUTOMATIC
STAINING
COVERSLIPPING
STATION**

AVR



CVR COVERSLEPPER

CVR - Features

- Possibility of loading continuously slide baskets (30 slides capacity each)
- It can mount coverglasses with different sizes (24x40/50/60 mm), with the rapid holder substitution
- Possibility to work in "wet" or "dry" mode
- Indication of mistakes during slide mounting
- Regulation of dispensing offset (position, quality, and speed without needle substitution)
- Mounting medium bottle with level sensor, rapid connection and easy to substitute
- Frontal exit for empty slide baskets



Mounting steps



The coverglass is taken by a suction cup electronic system while the dispensing needle moves from its stand-by position in the solvent.



The glass is brought to the mounting site by a mechanical arm and the medium is dispensed on the section



The coverglass is mounted through a particular movement of the suction cup system which avoids bubble air formation



The mounted slide is put on a dedicated tray and the dispensing needle comes back to stand-by position into the cleaning solvent

Revolutionary and unique automatic mounted slides exit system

In spite of the other coverslippers on the market, our instrument is able to put the mounted slides directly on dedicated trays in order to avoid waste of time for the users.

When the tray is complete, it is automatically pushed forward in order to:

- advise the completion of the tray
- easy to catch for the user



AUTOMATIC STAINING COVERSLEPPING STATION

AVR



Designed to provide best results and speed up the work in lab

AVR - Features

- Integrated colour touch screen, with indication of all working parameters
- Modular system
- Intuitive and easy to use menu
- Multilingual software
- Acoustic and optical signal for the end of staining and mounting cycle
- Acoustic and optical warning
- Possibility to continuously loading baskets, even with the frontal cover closed
- Automatic cleaning of the dispensing needle, after every cycle
- Vapours aspiration system with integrated filter

Versatility and reliability in your lab

Innovative and unique exit system of mounted glass slides, which improves and simplifies the user's activity.



SLIDE STAINER

AUS



AUS - Features

- Continuous loading of slide baskets (30 slides capacity each)
- Simultaneous staining of 10 baskets (using the same staining protocol)
- 40 total stations (28 for reagents, 5 for washing, 2 for drying, 2 for loading and 3 for unloading)
- Basket agitation "waving" which guarantees reagent homogeneity and reduction of residue
- Possibility to save more programs
- Colour touch screen and possibility of transferring reports on external memory
- "Antidripping system" completely settable by the user
- Integrated UPS system
- "RMS" which allows to set the maximum number of baskets which can pass through a reagent
- Settable password (one level)

The AUS2 is able, thanks to an optional feature, to recognize if the basket inserted into the loading station is loaded with histologic or cytologic slides.

Between the 18 different protocols present in the stainer it is possible to define a specific protocol for histologic stains and one for cytologic stains.

The instrument will automatically select and launch the corresponding one when he detects the tipe of basket.

This feature allows to reduce any possible error during the loading of the unit and optimizes the loading operation by the user.

For this particular function special basket have been created, and have been marked with the letter "H" for histologic samples, and with the letter "C" for cytologic ones.

Automatic identification of the basket Histologic / Cytologic.



Simple protocols monitoring

Through a simple and clear user interface every operation is under total control.

All 40 stations and all actuators with their status (agitation system, water valves, air filtration, dryers, sensors, IN/OUT drawer) are clearly represented on the color screen. During the operating phases the end-effector in movement is shown (basket translator).

It is possible to check the work in progress of each slide basket simply touching the related basket icon. Touching the reagent tanks it is possible to know in any moment their situation (contents, baskets processed, last change date).



Statistic Analysis

Thanks to the control function of the slide production with the different type of coverslip glass (40-50-60 mm) it is possible to check:

- Daily production
- Weekly production
- Monthly production

Simple steps monitoring

Thanks to an intuitive software operator interface it is possible to always control :

- The different mounting steps of the slides
- The trays that are present in the output station and how many slides are present on them
- The type of the coverslip glass in use
- Mounting medium level , Output chutes for the empty baskets and Drawer and Cover status



Accessories

Coverglass holders with three different measures. Dispensing needle cleaning system to guarantee the continuous work of the instrument without interruption and obstruction. Dedicated slide trays (10 places) which can be extracted and piled for an easy transport.

Intelsint also provides adaptors for slide baskets of the most popular automatic stainers on the market.

Automatic Station AVR

Dimensions and weight	Dimensions (LxDxH)	2010 x 770 x 780 mm
	Monitor (l)	+ 400 mm
	Worktop (LxD)	2010 x 770 mm
	Weight	230 kg
Electrical data	Power supply	115 ÷ 230 V
	Frequence	50 ÷ 60 Hz
	Electrical power	1,45 kW
Working environment	Temperature / Humidity	15 ÷ 30 °C / 70% max

Slide Stainer AUS

Dimensions and weight	Dimensions (LxDxH)	1220 x 770 x 780 mm
	Monitor (L)	+ 400 mm
	Worktop (LxD)	1220 x 770 mm
	Weight	155 kg
Electrical data	Power supply	115 ÷ 230 V
	Frequence	50 ÷ 60 Hz
	Electrical power	0,8 kW
Working environment	Temperature / Humidity	15 ÷ 30 °C / 70% max
Internal composition	Reagent stations	28 (485 ml capacity)
	Rinse stations	5 (with pressure and flow regulator)
	Loading stations	2
	Unloading stations	3
	Heated stations	2 (60°C ±1°C)
Productivity		10 basket of 30 slides maximum, with the same protocol
Connections	Loading tube H2O (Ø)	10 mm
	Exhaust pipe H2O (Ø)	18 mm (¾")
Exit	USB ports	4
	Free Contact	1

Coverslipper CVR

Dimensions and weight	Dimensions (LxDxH)	860 x 770 x 780 mm
	Worktop (LxD)	860 x 770 mm
	Weight	80 kg
Electrical data	Power supply	115 ÷ 230 V
	Frequence	50 ÷ 60 Hz
	Electrical power	0,6 kW
Working environment	Temperature / Humidity	15 ÷ 30 °C / 70% max
Productivity		180 slides/hour (directly on the tray)
Mounting Medium	Bottle volume	500 ml
Mounted slides output		9 trays with 10 places each



IMPORT AND TRAINING CENTER

2120 HWY. 19 NORTH
 Thomaston, GA 30286
 Phone 1-866-398-9478 Fax 1-706-243-4923
 sales@pathologyserviceinc.com
 www.pathologyserviceinc.com

